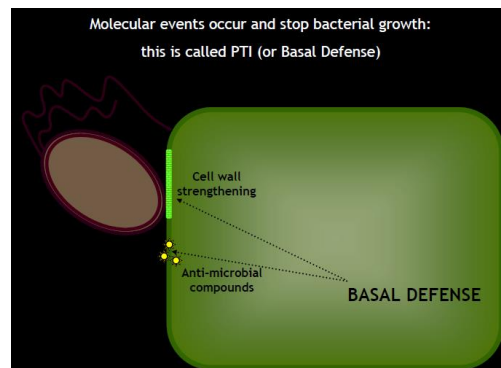
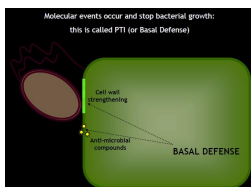
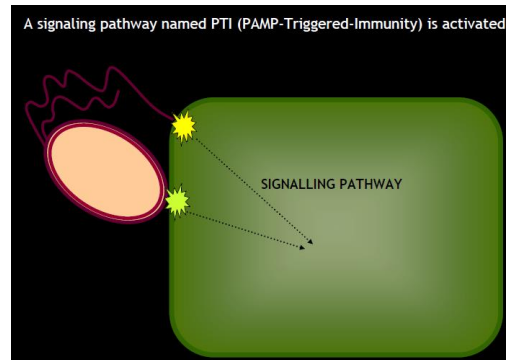
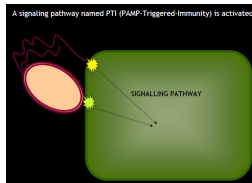
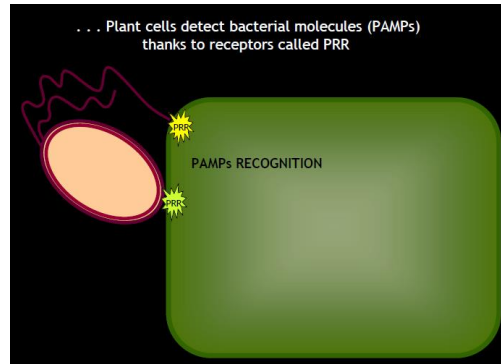
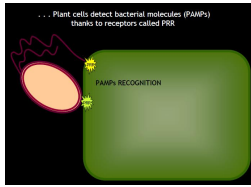
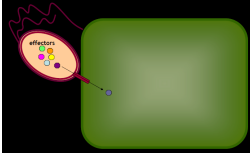


# Unit 10 The Lymphatic System

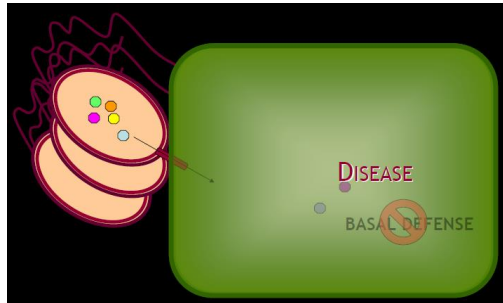
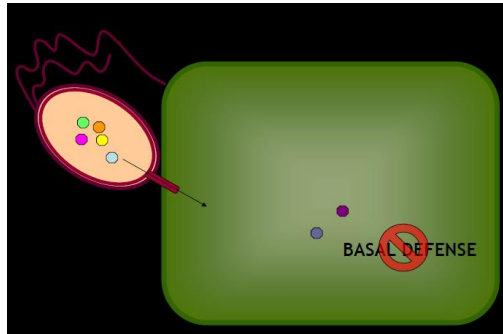
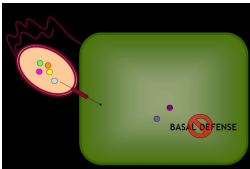
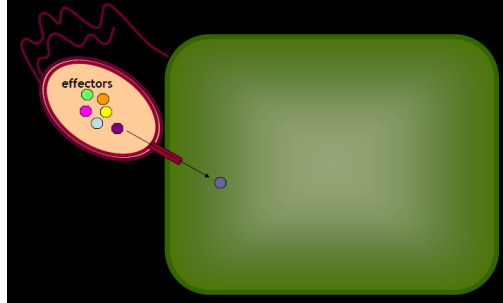
Question #57: How does the complexity of the human immune response compare to that of other types of organisms?

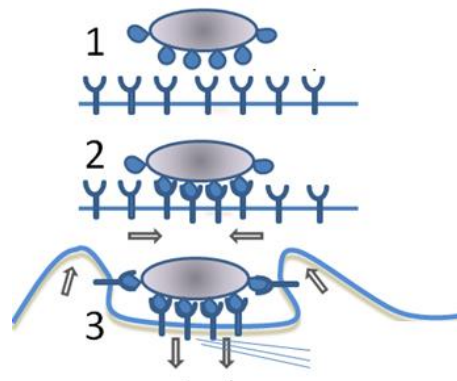
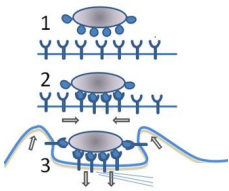
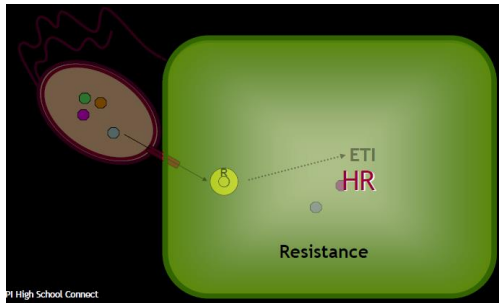
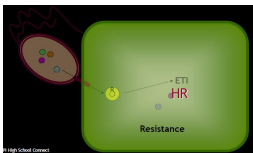
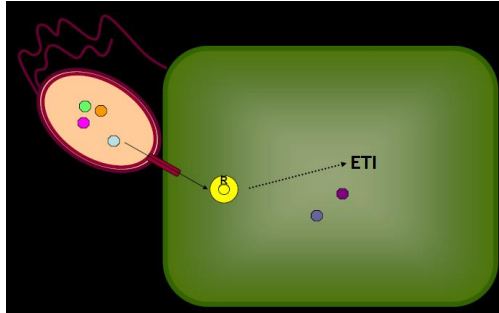
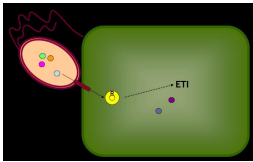
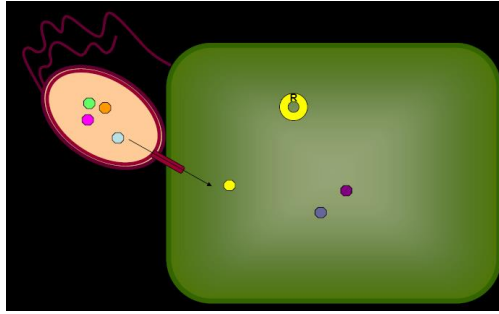
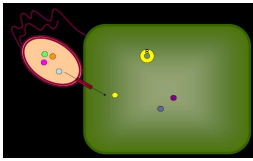


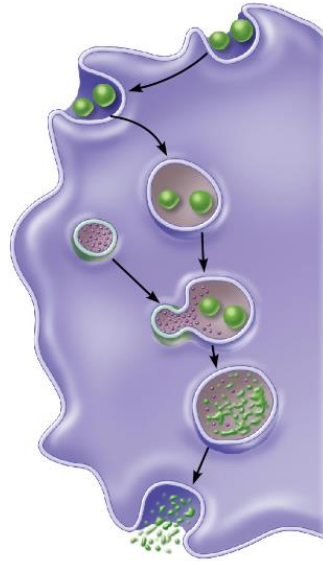
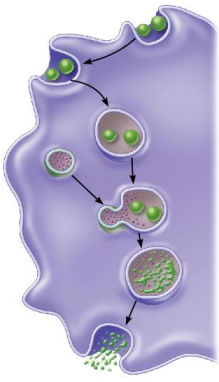
Bacteria often have a Type III Secretion System allowing them to inject proteins (called "effectors") directly into plant cells



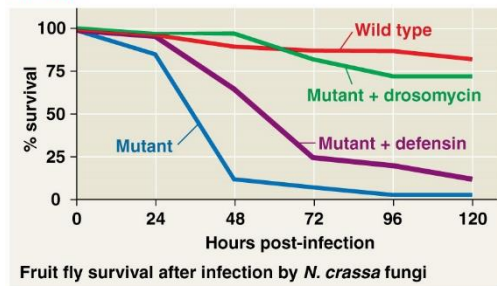
Bacteria often have a Type III Secretion System allowing them to inject proteins (called "effectors") directly into plant cells



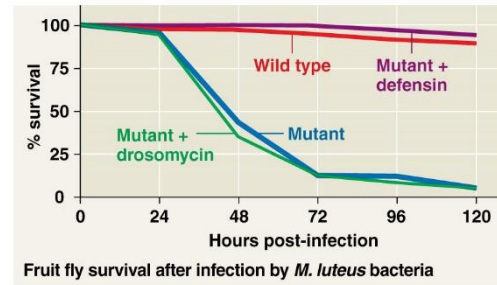
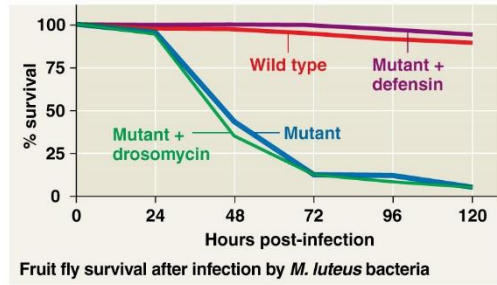
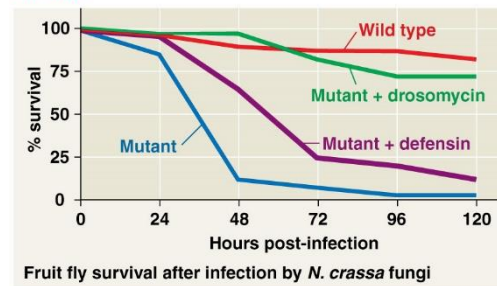




**RESULTS**



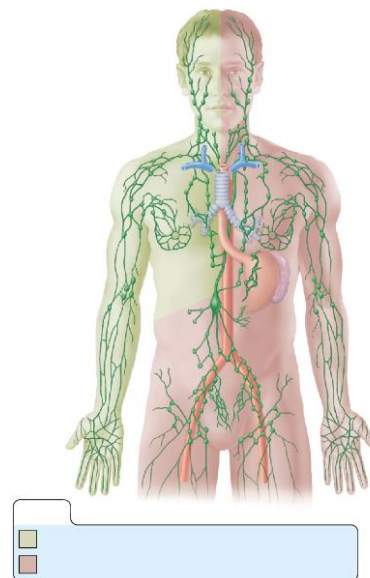
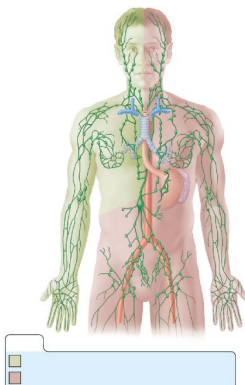
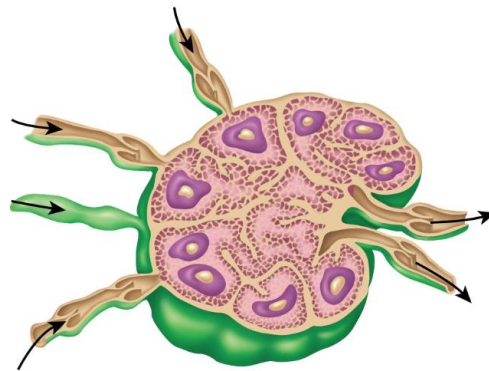
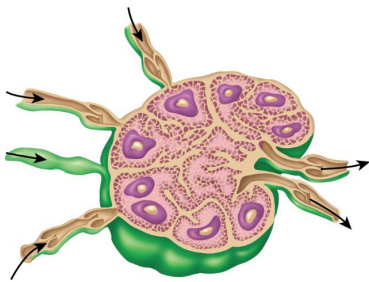
**RESULTS**

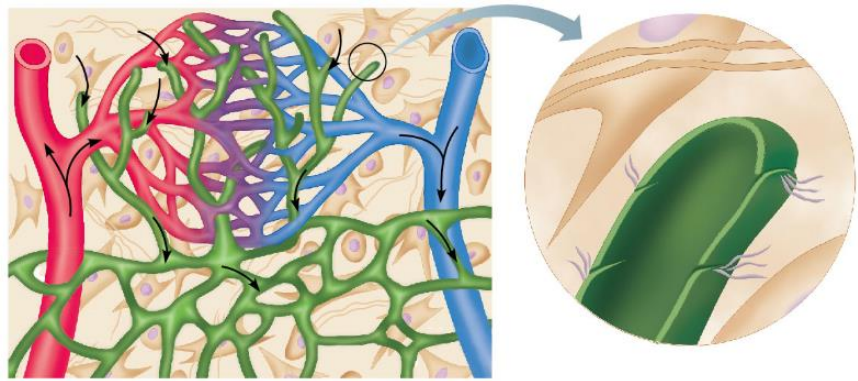
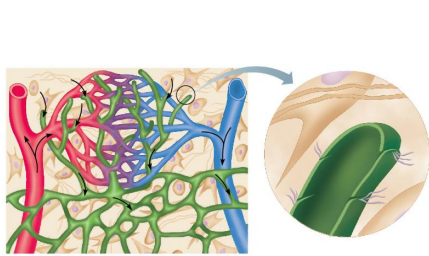
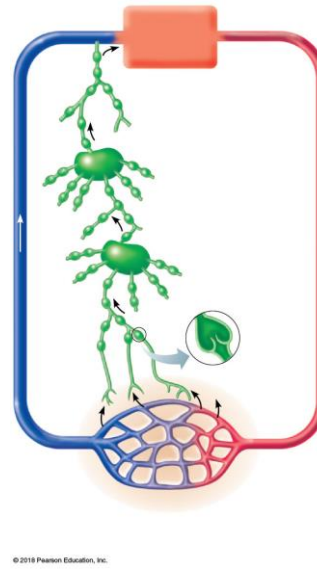
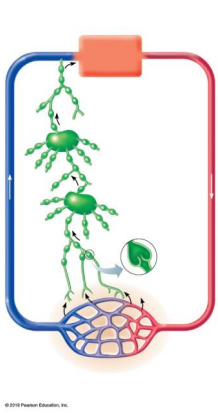


	Barrier defenses	Internal Chemical defenses	Phagocytic cells, Natural Killer cells, antimicrobial proteins, and inflammatory response	Adaptive immunity (humoral)	Adaptive immunity (cytotoxic)
Plants					
Invertebrates					
Vertebrates					

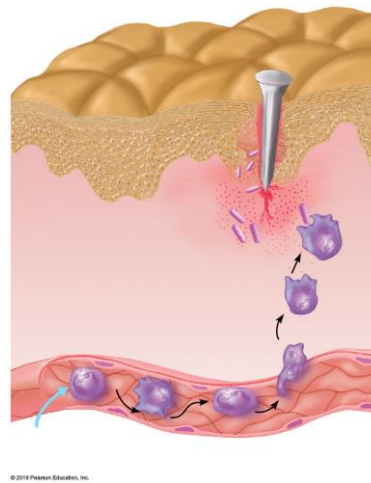
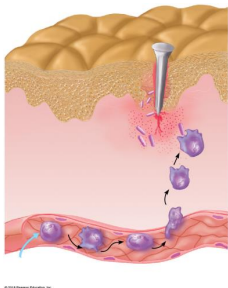
	Barrier defenses	Internal Chemical defenses	Phagocytic cells, Natural Killer cells, antimicrobial proteins, and inflammatory response	Adaptive immunity (humoral)	Adaptive immunity (cytotoxic)
Plants					
Invertebrates					
Vertebrates					

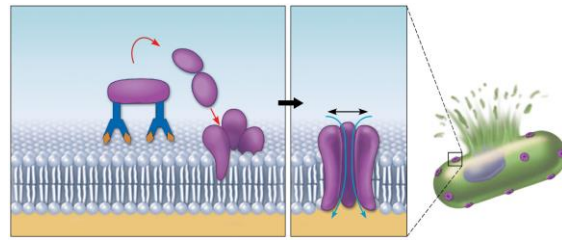
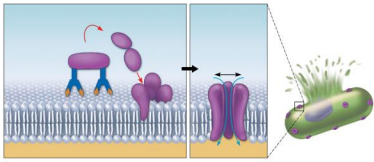
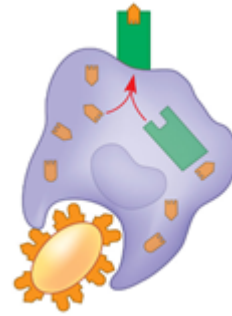
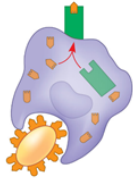
Question #58: How is the human immune system structured?





Question #59: How does the innate immune system protect against pathogens?

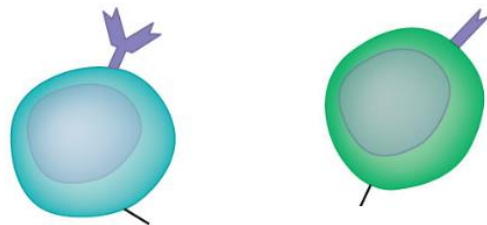
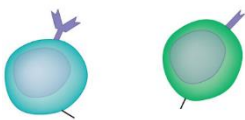
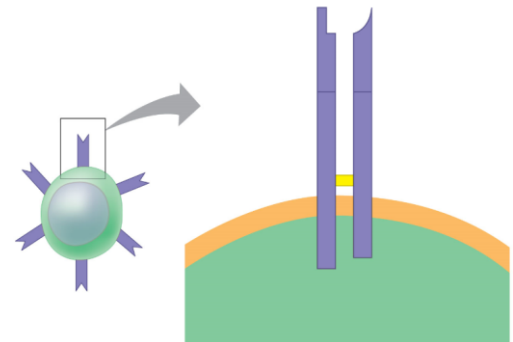
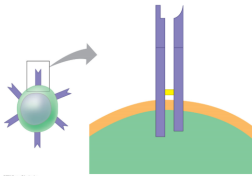


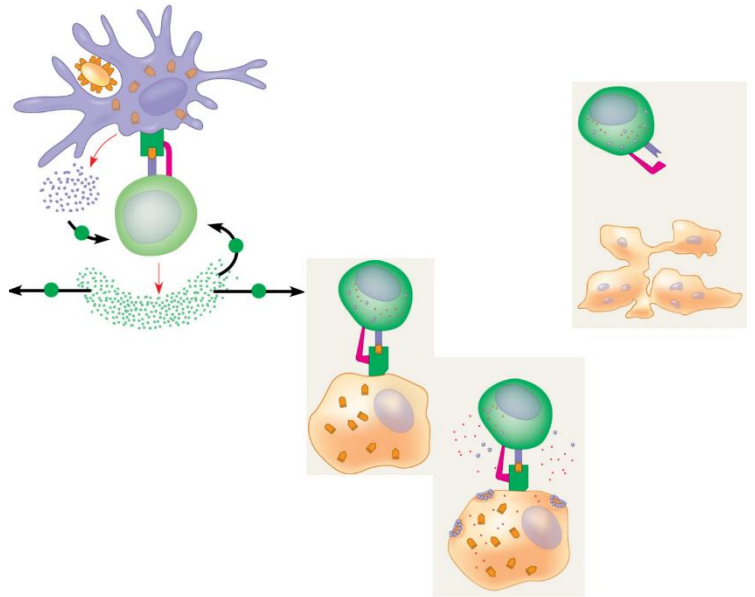
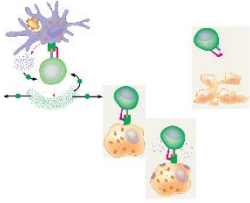
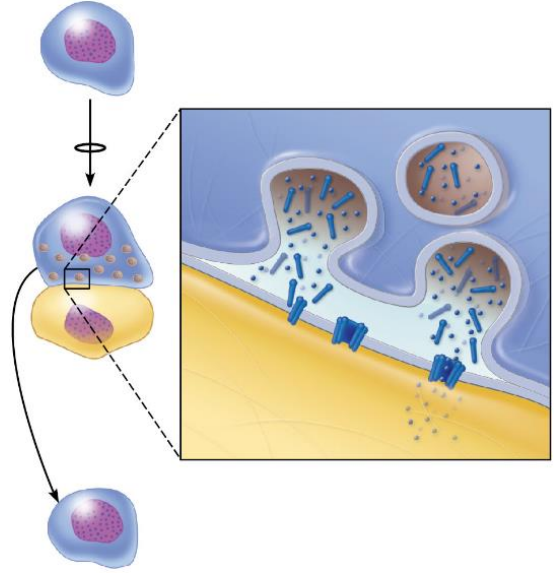
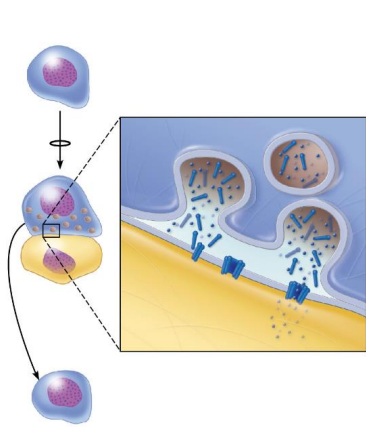


© 2014 Pearson Education, Inc.

© 2014 Pearson Education, Inc.

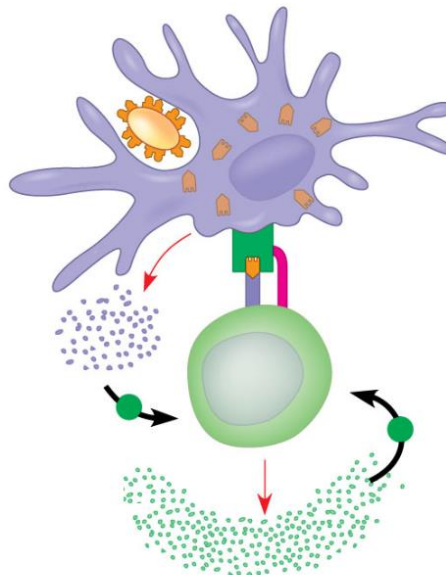
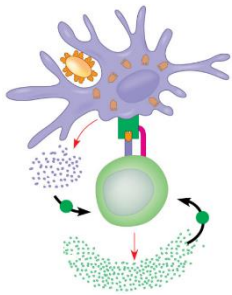
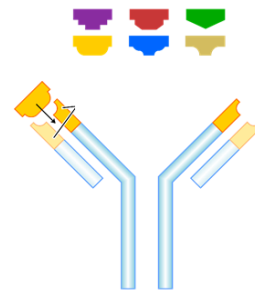
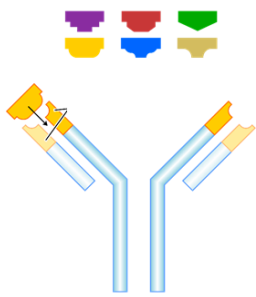
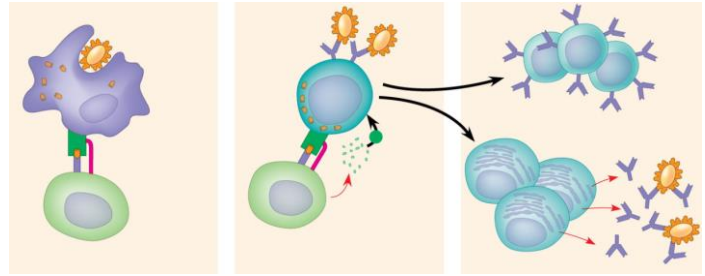
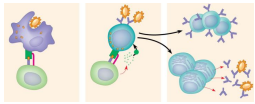
Question #60: How does the cell mediated immune system protect against pathogens?

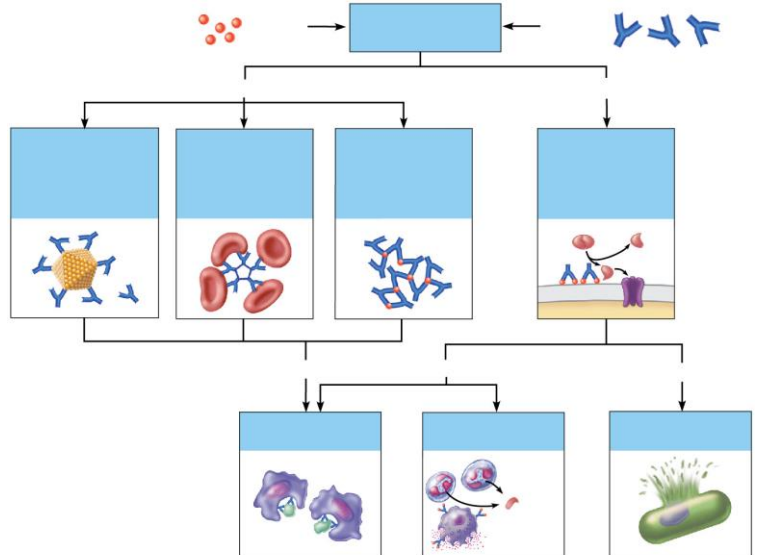
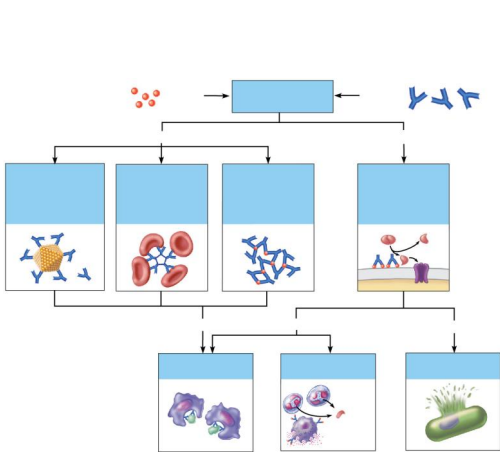
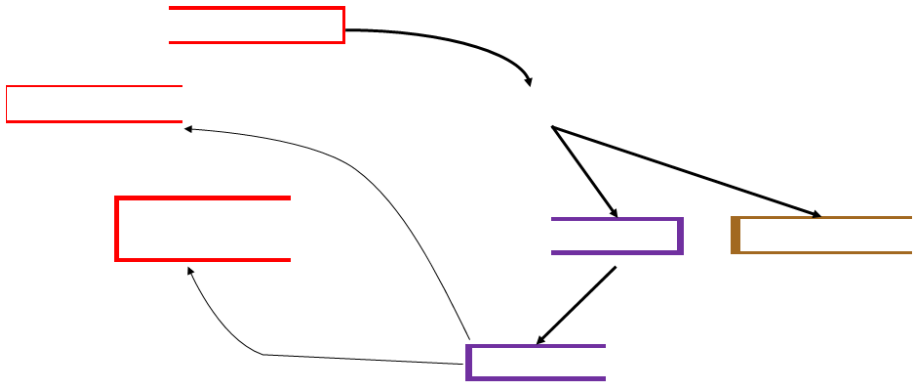
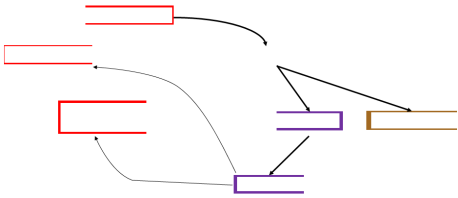
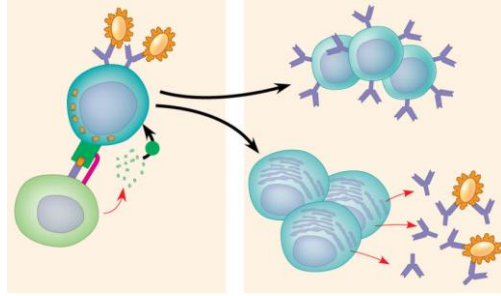
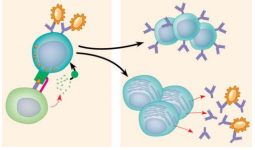




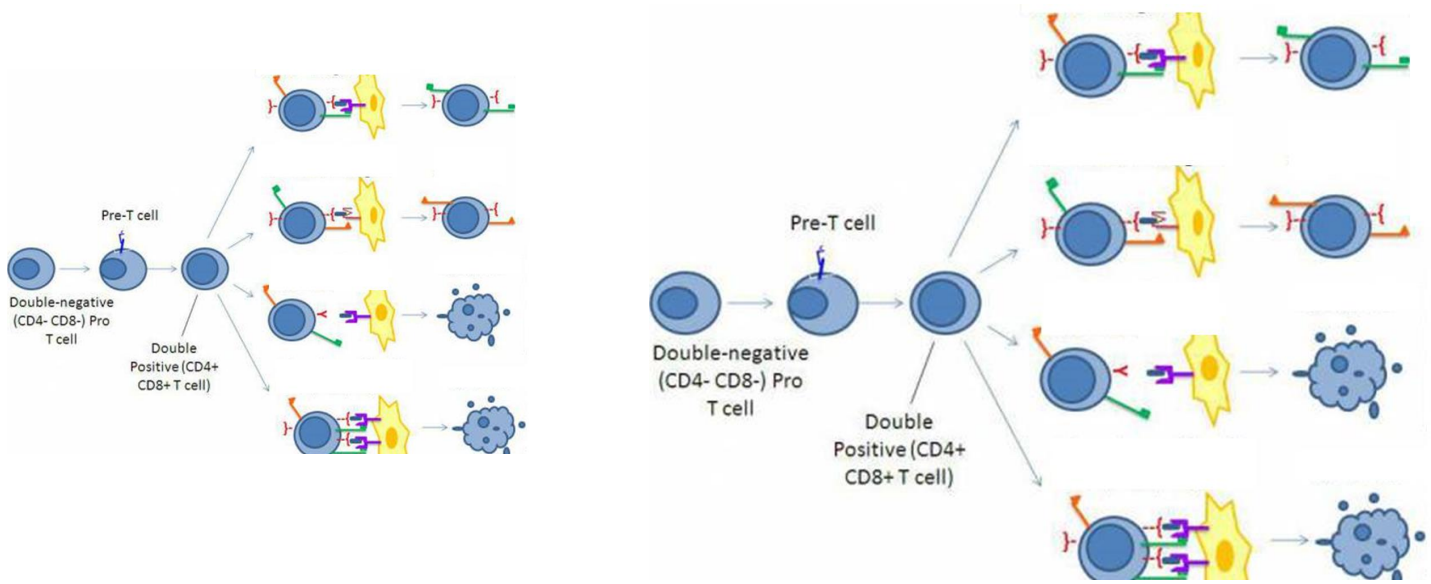


Question #61: How does the humoral adaptive immune system protect against pathogens?

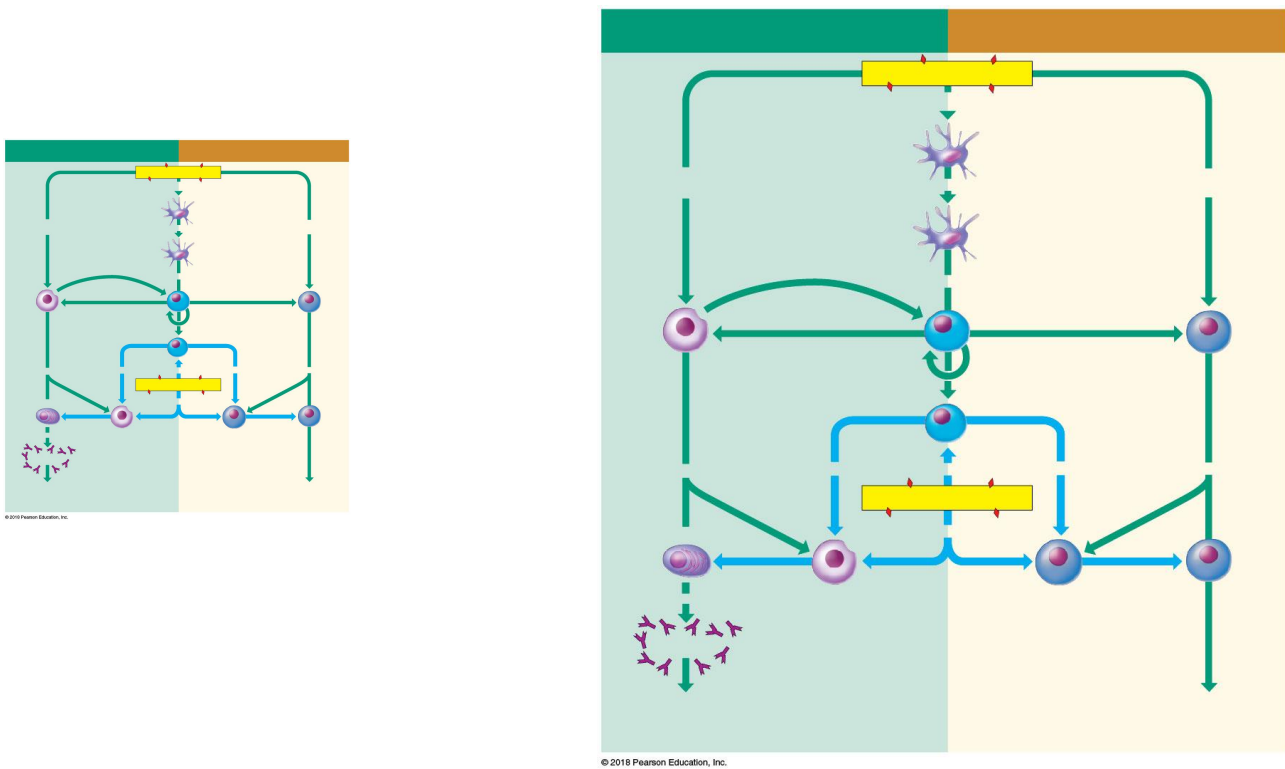


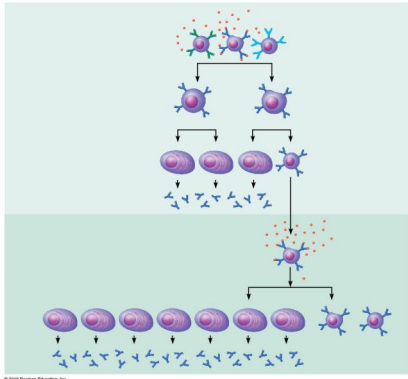


Question #62: How do white blood cells know not to attack your own cells?

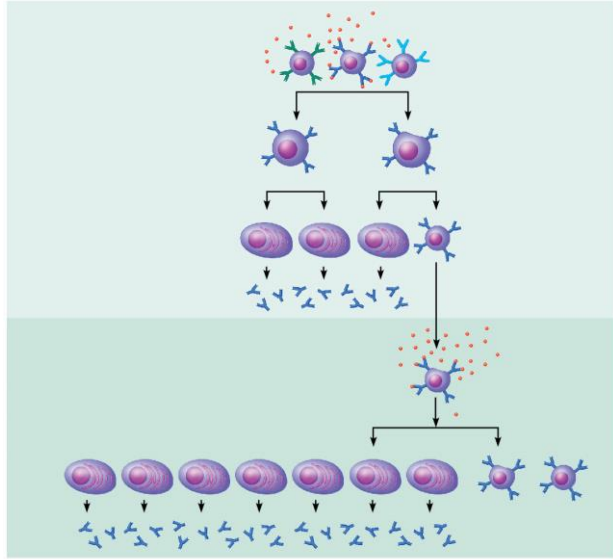


Question #63: How do vaccines work?





© 2019 Pearson Education, Inc.



© 2019 Pearson Education, Inc.

